



Goldhurst Terrace

West Hampstead, London, NW6 3EP

£1,673 Per Week

A spectacular three double bedroom detached house, situated right in the heart of West Hampstead. This property has undergone a full refurbishment throughout, and offers a fabulous family home with off road parking, and a wonderful newly decked front patio.

This fine home comprises of:- Entrance Hallway with guest WC, bright and spacious reception room with wooden flooring and plenty of natural light, open plan smart kitchen/dining room, with fitted appliances, stairs leading up to a wide landing, master bedroom with en-suite shower/WC, two further double bedrooms, and family bathroom/WC. Outside there is a large landscaped garden and private driveway parking space. This property is offered furnished and is available NOW for long let.

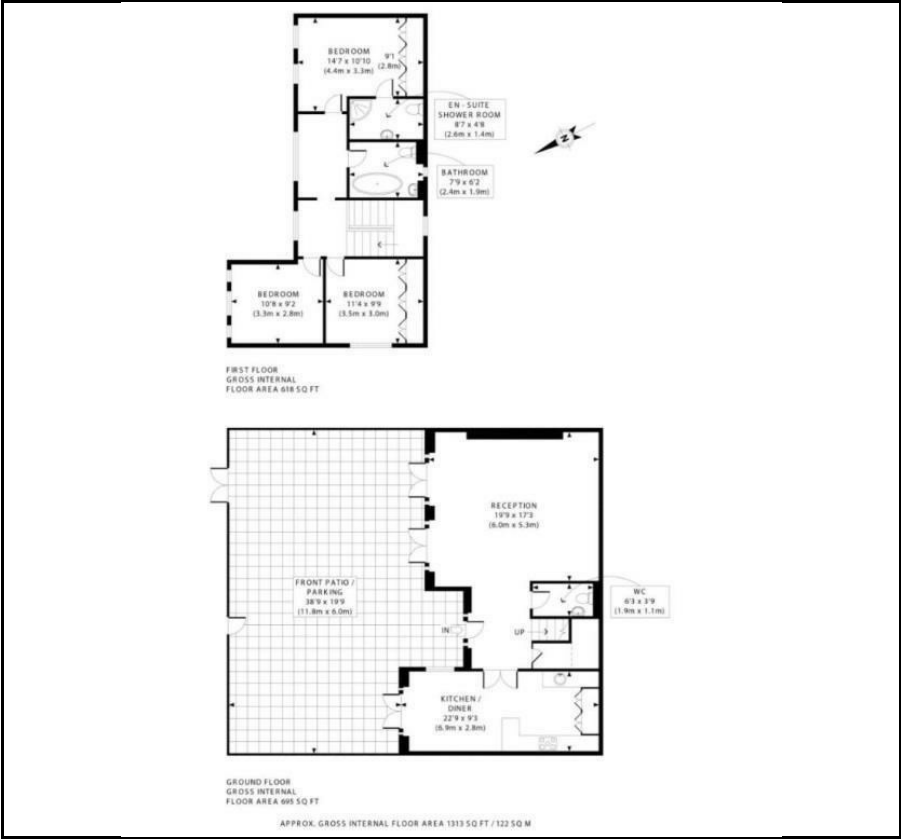
- Detached House
- Three Double Bedrooms
- Two Bathrooms
- Wooden Flooring
- Newly Refurbished
- Driveway Parking
- Private Garden

Viewing

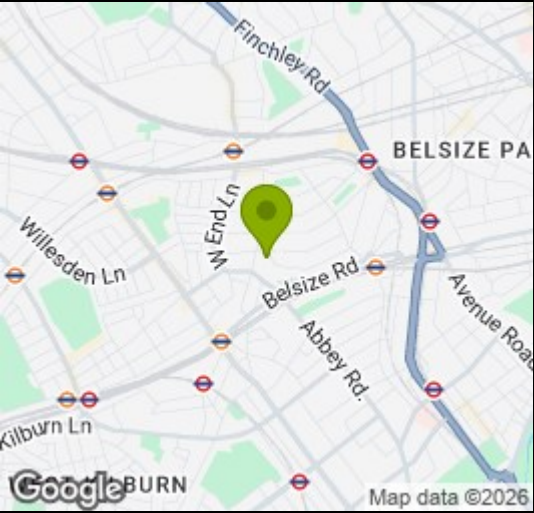
Please contact our Messila Residential Office on 020 7586 6699 if you wish to arrange a viewing appointment for this property or require further information.



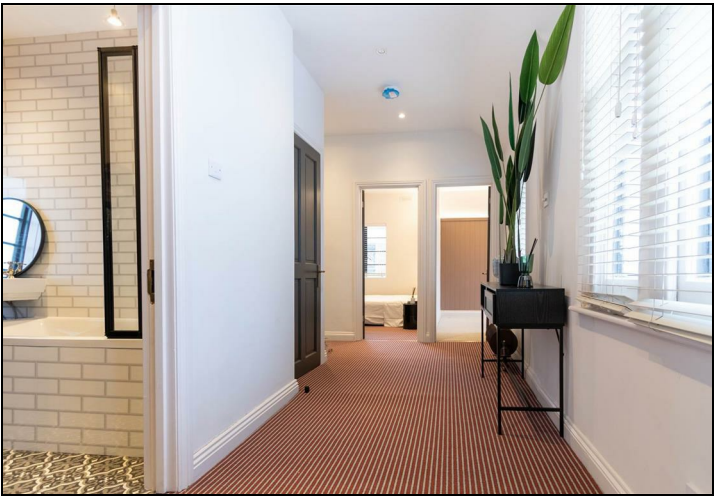
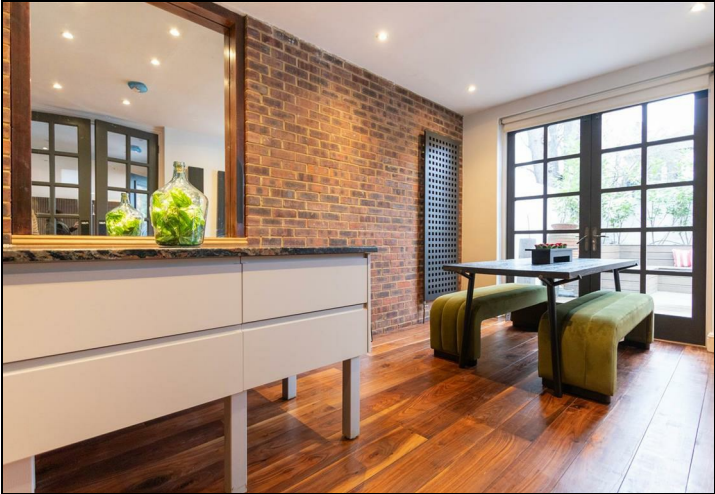
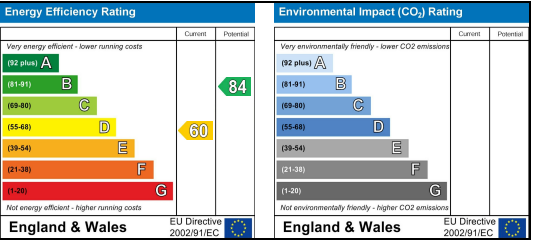
Floor Plan



Area Map



Energy Efficiency Graph



These particulars, whilst believed to be accurate are set out as a general outline only for guidance and do not constitute any part of an offer or contract. Intending purchasers should not rely on them as statements of representation of fact, but must satisfy themselves by inspection or otherwise as to their accuracy. No person in this firms employment has the authority to make or give any representation or warranty in respect of the property.